

# Fly Swishing



# Fly Swishing

(Players 1–4)

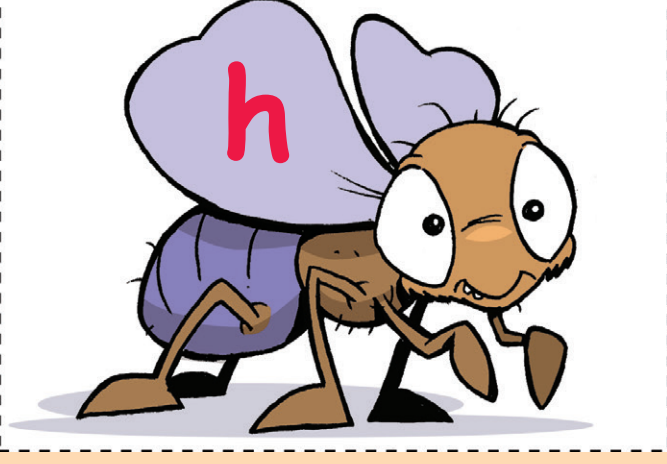
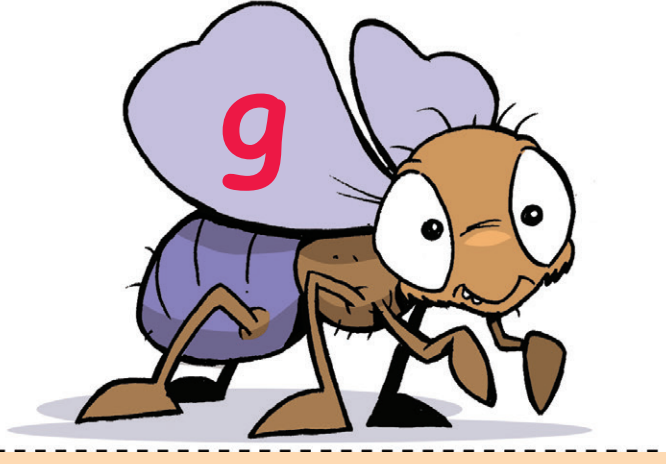
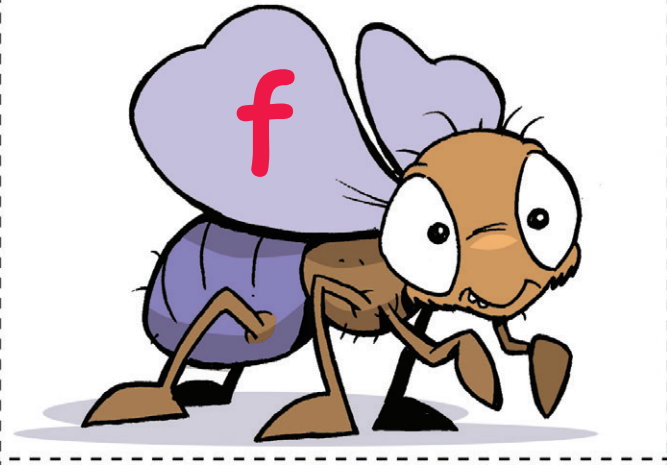
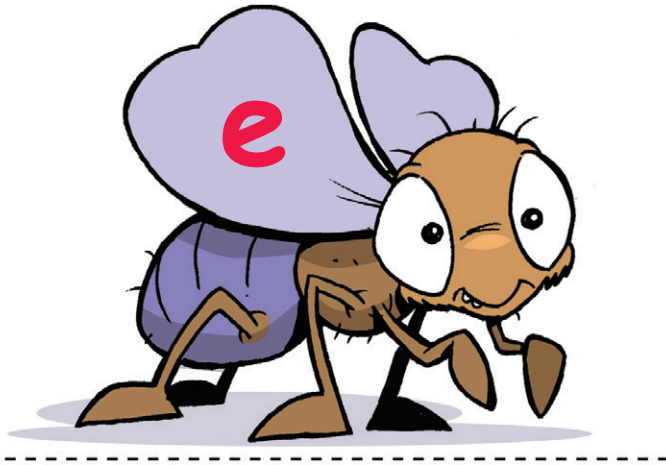
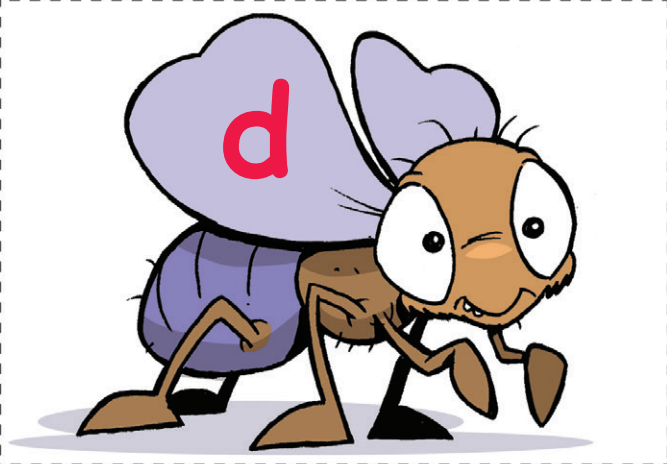
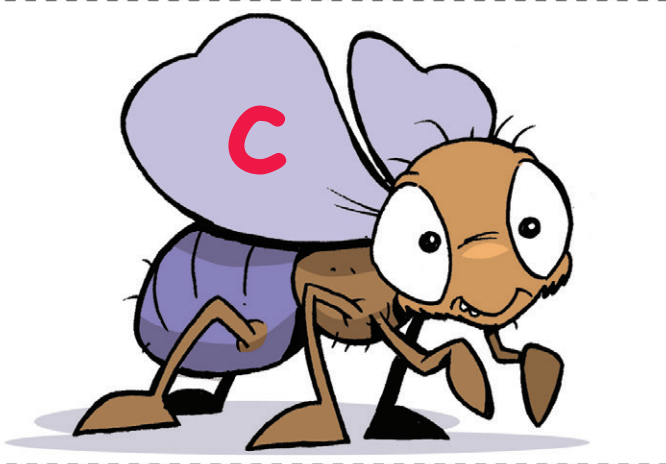
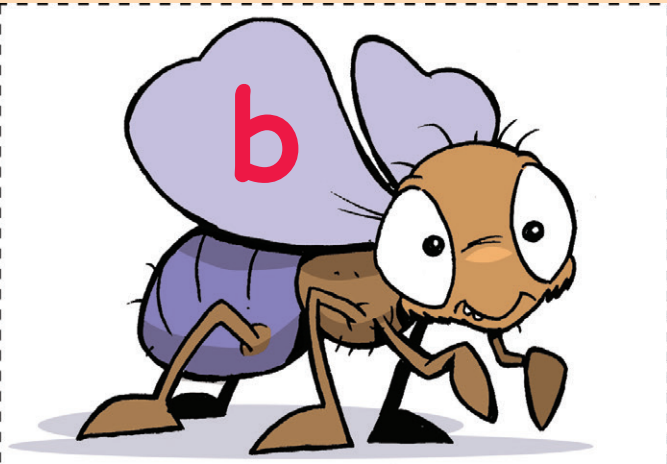
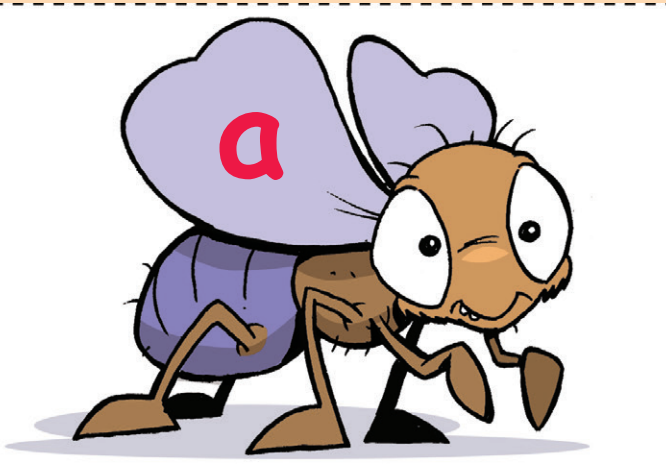


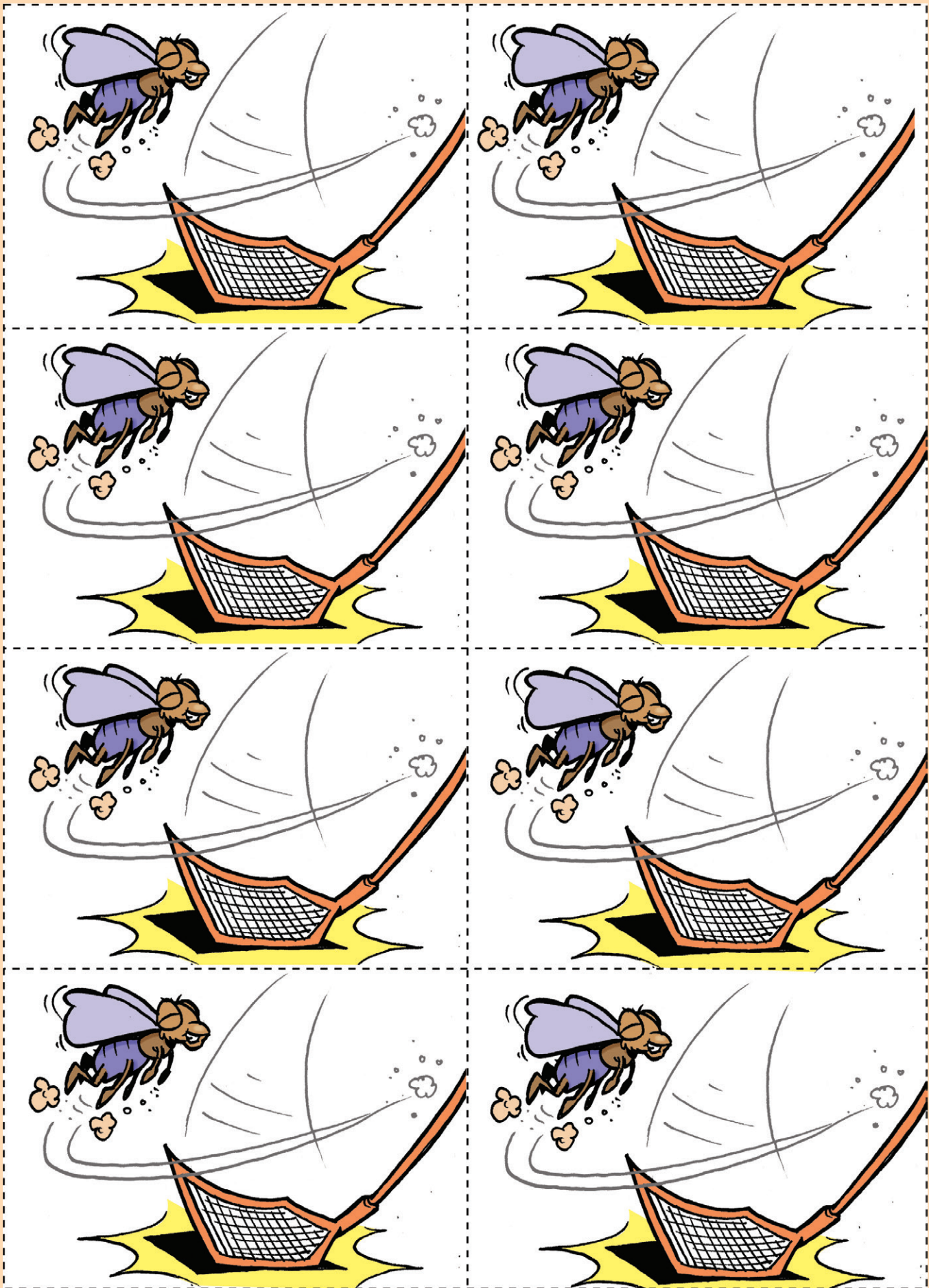
1. Distribute the fly swishers equally amongst players.
2. Place the fly cards face down in middle of the group.
3. Take turns to choose a fly.
4. If the letter on the fly card is the beginning sound of the picture on your fly swisher, place it in on top. If it is not a match return it to the middle of the group.
5. The first player to match all swishers with a fly is the winner.

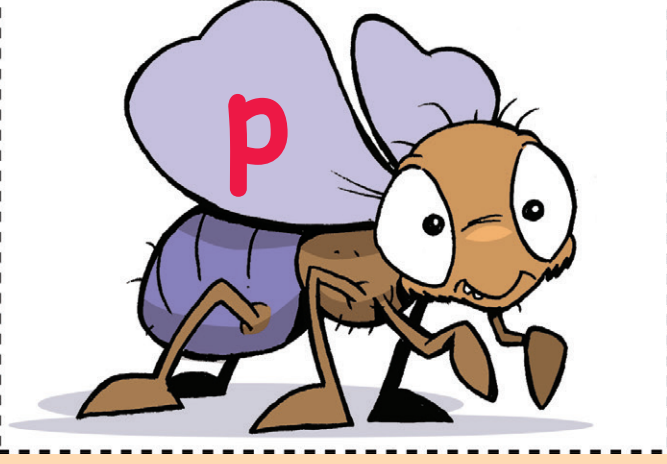
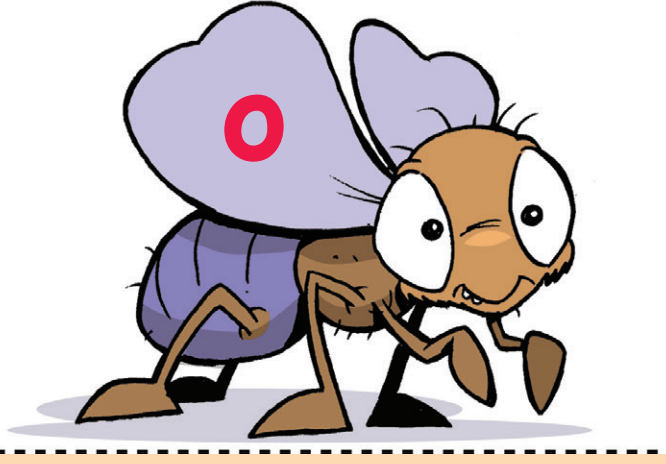
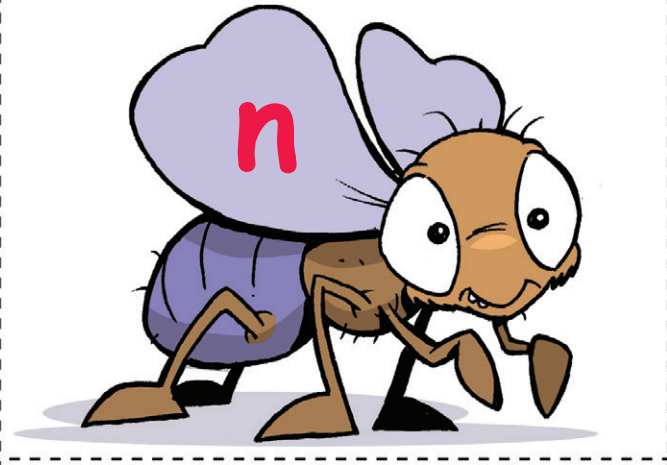
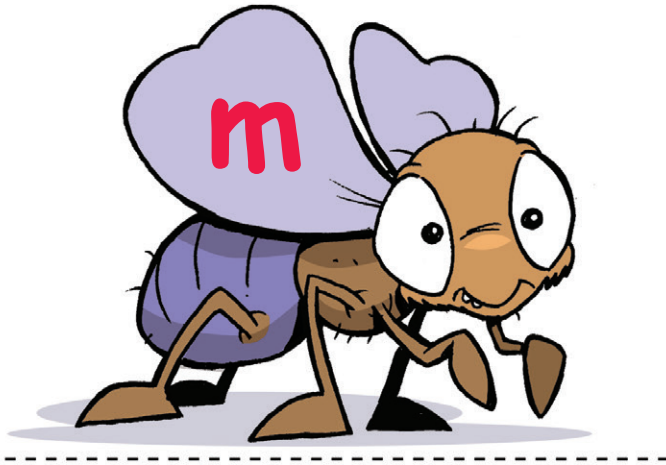
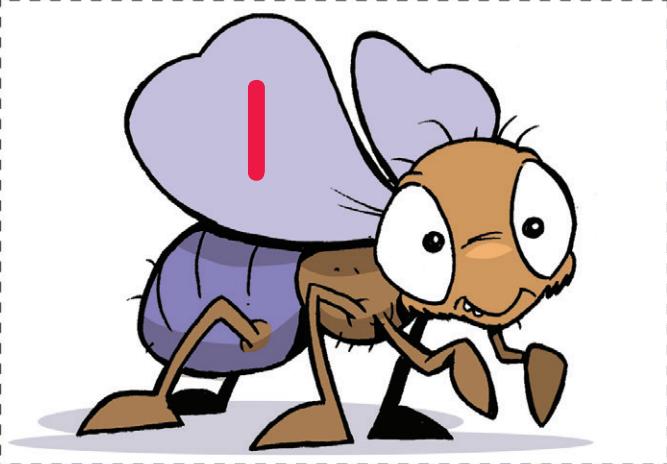
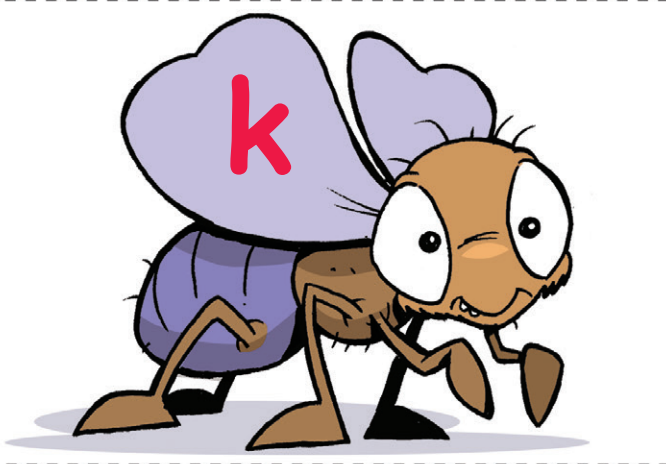
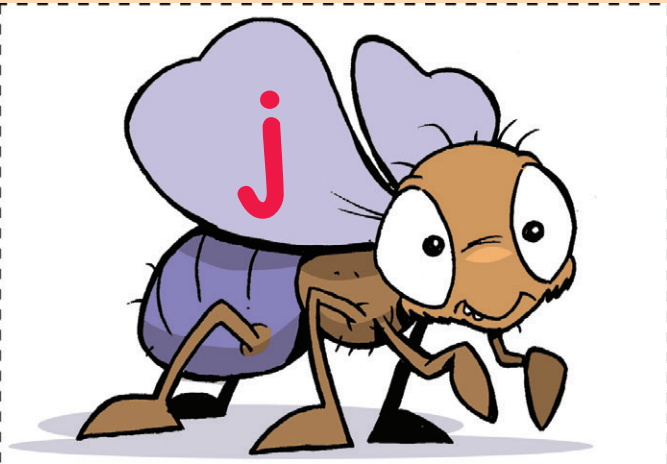
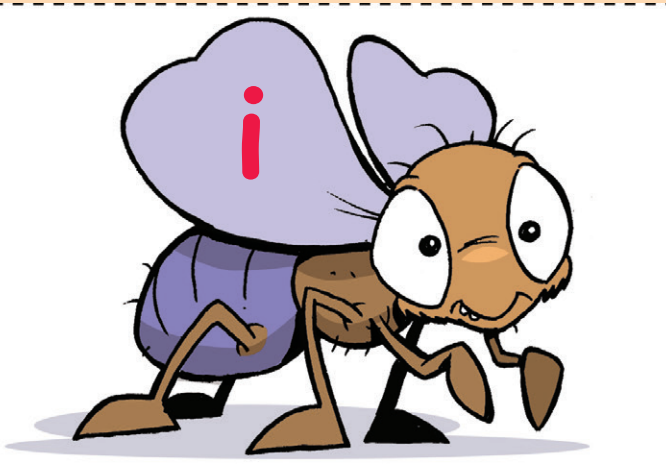
# Fly Swishing

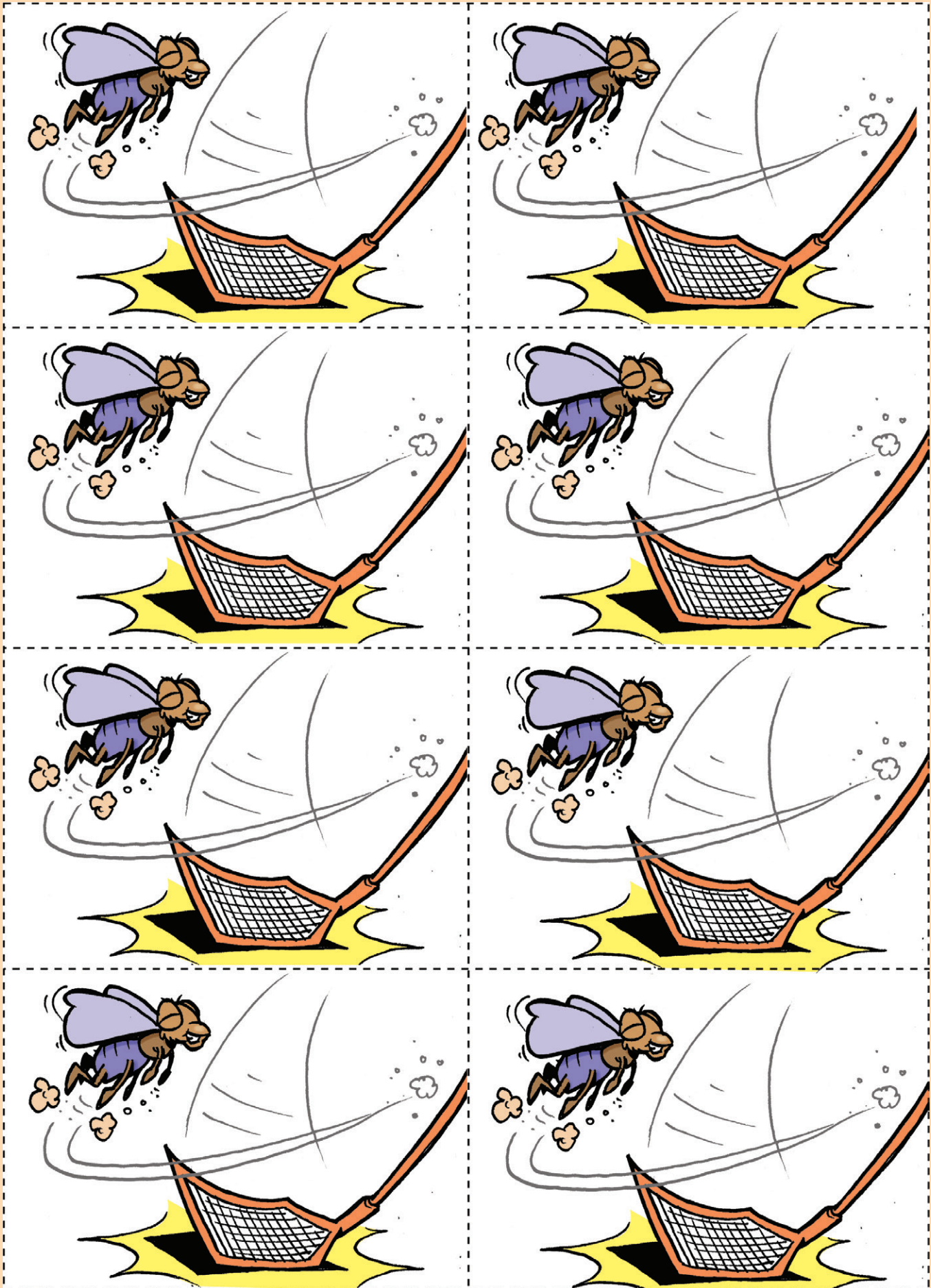


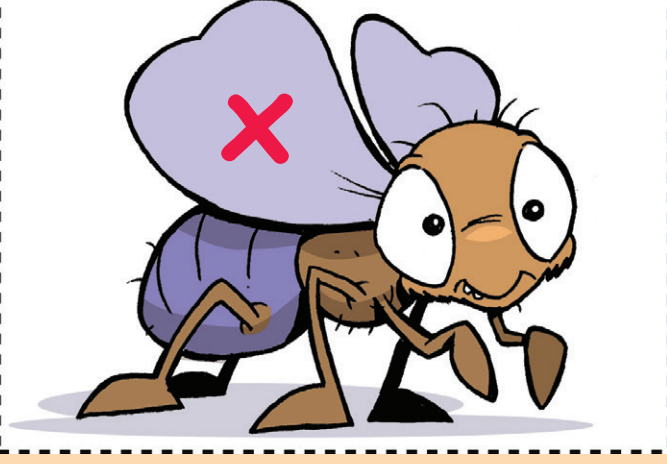
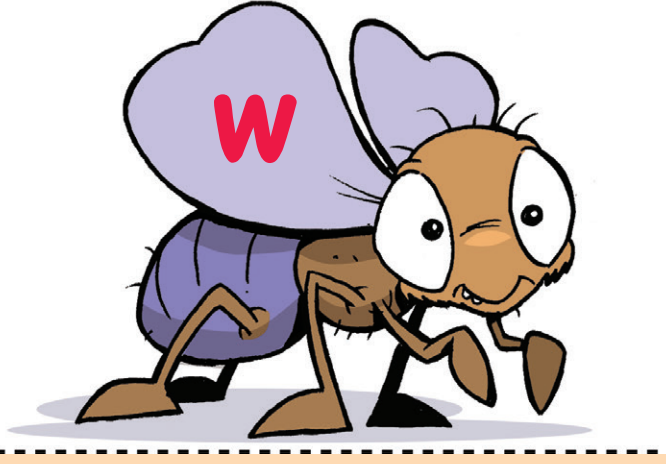
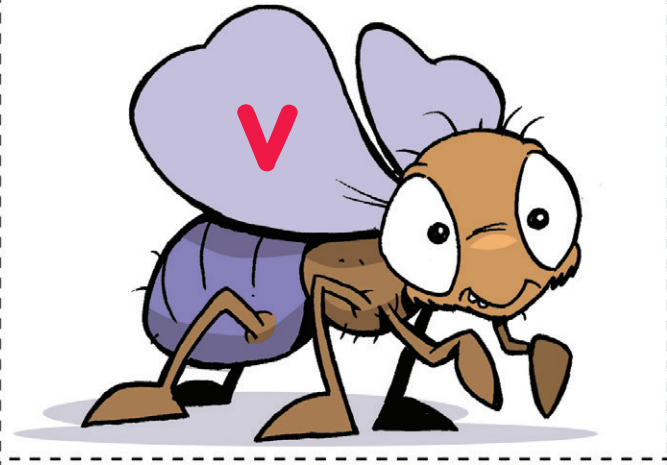
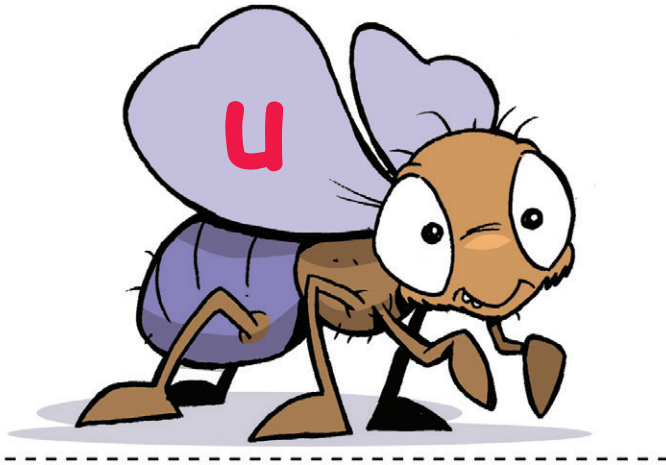
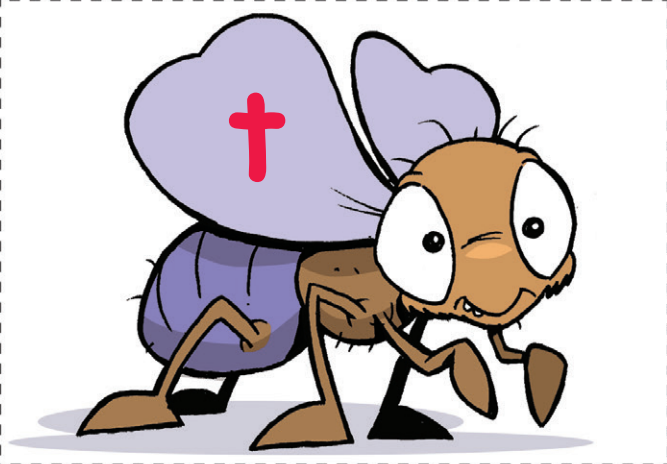
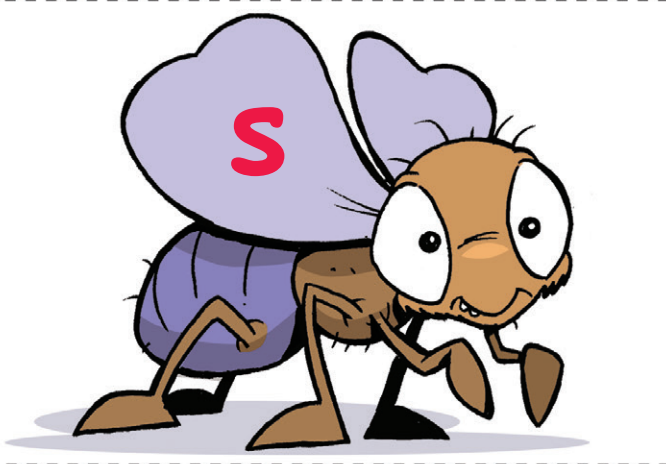
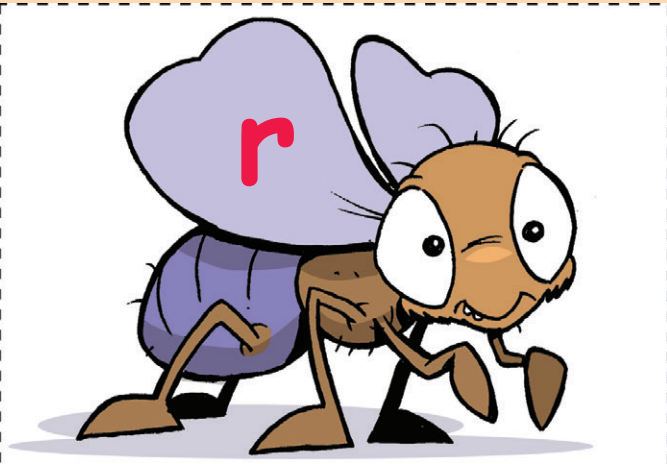
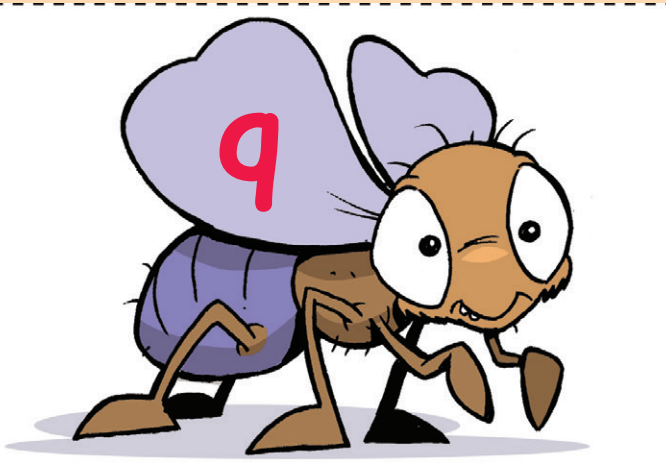


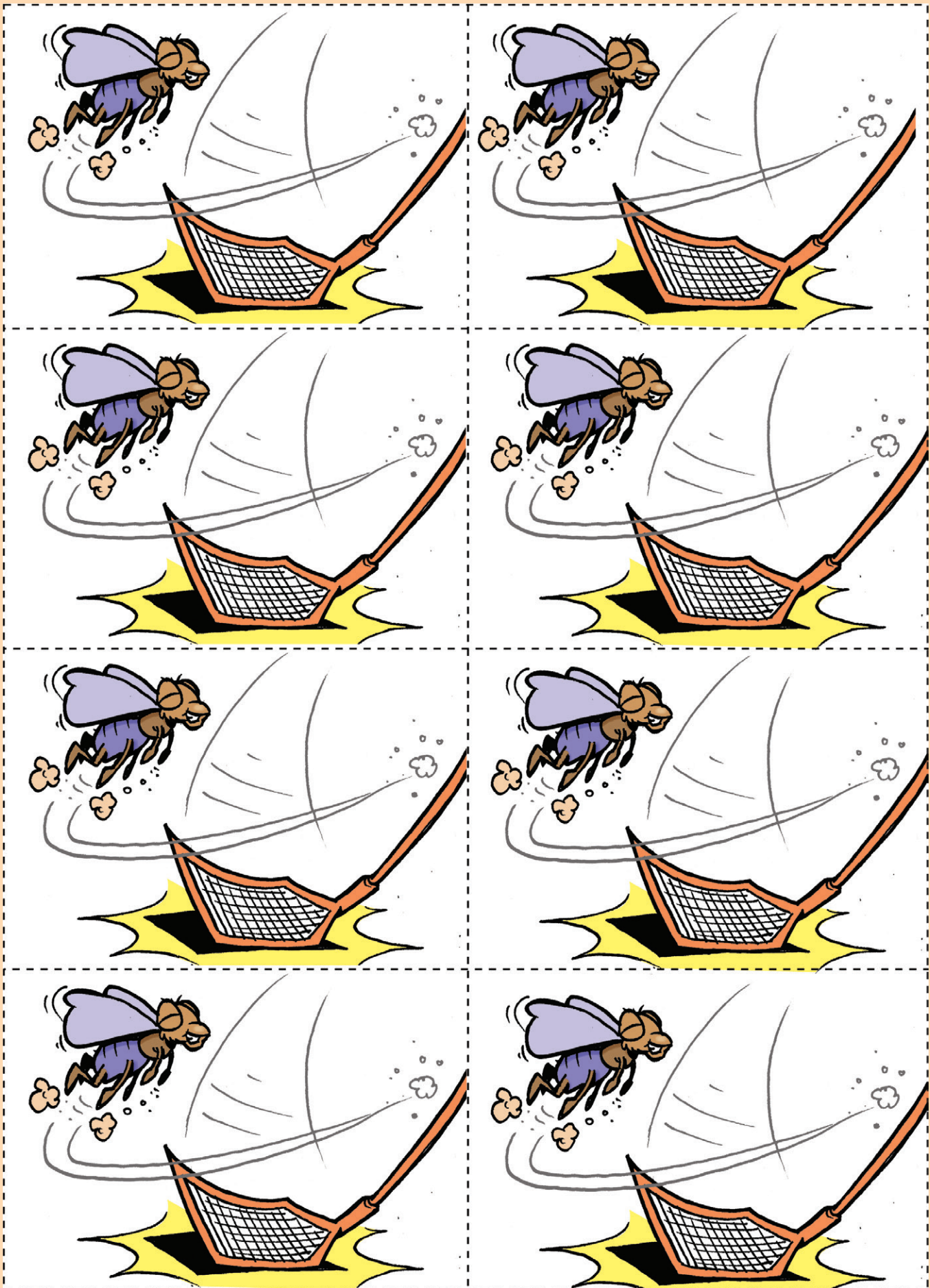




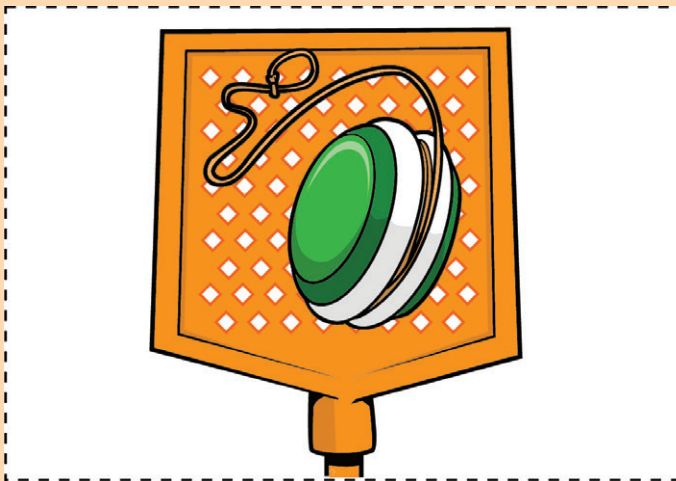
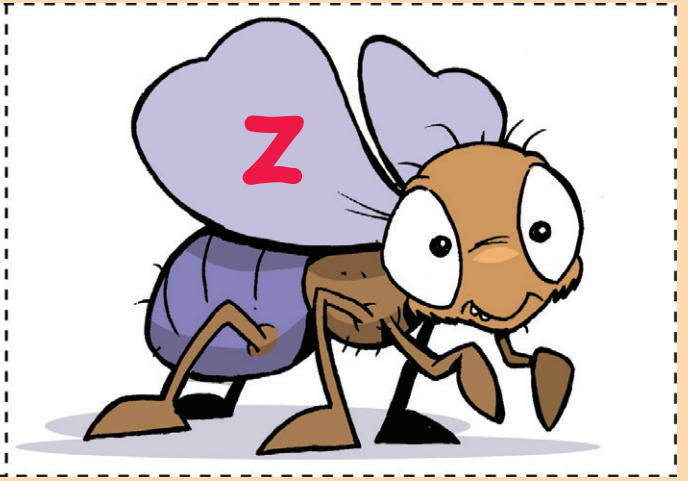
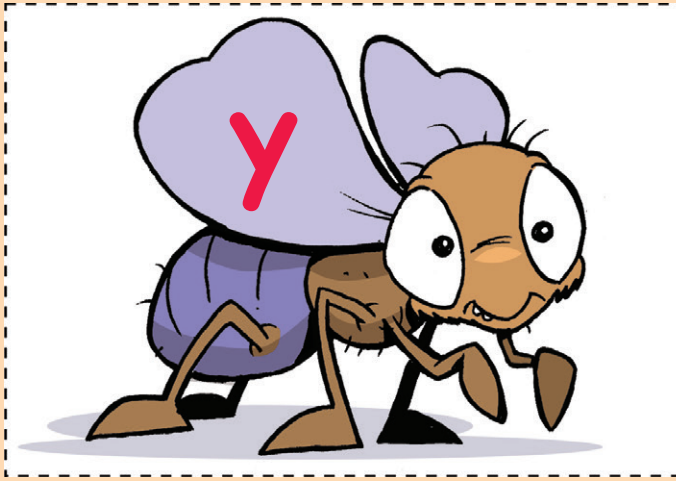


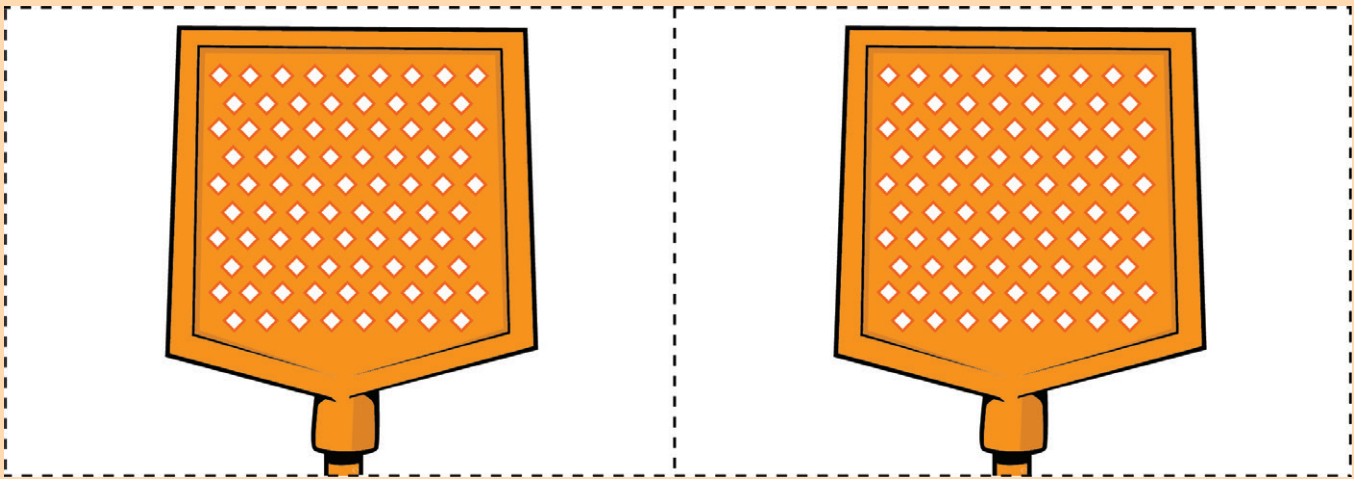
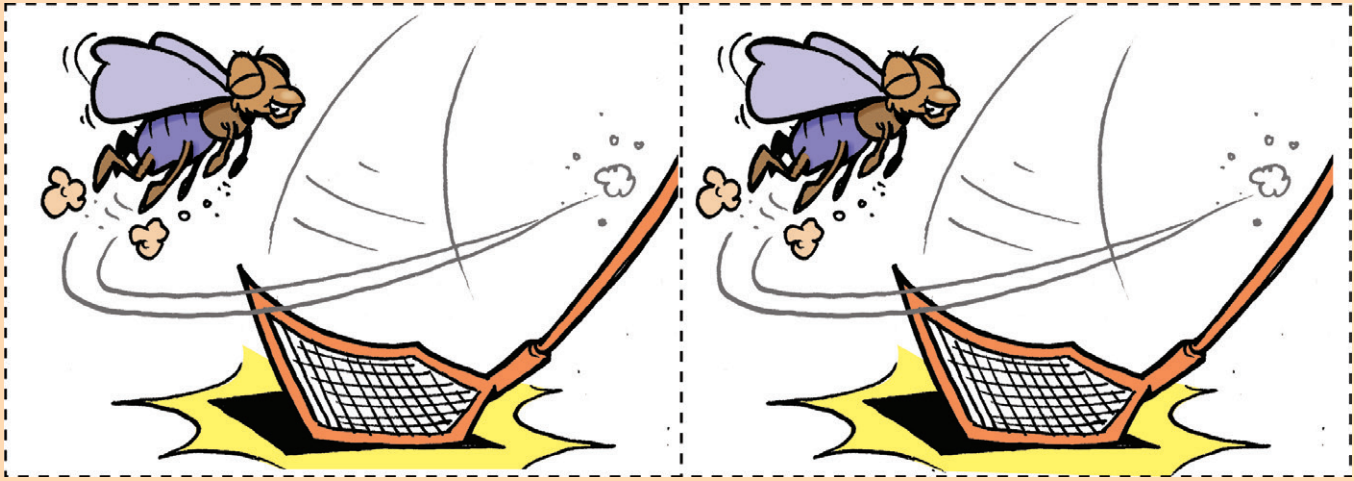


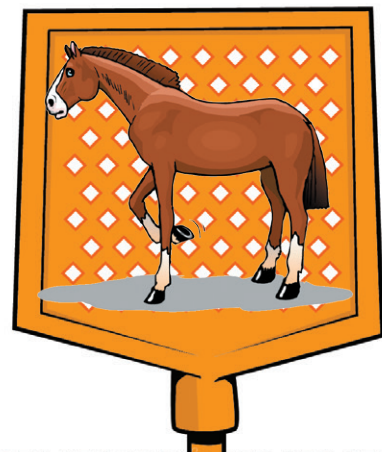
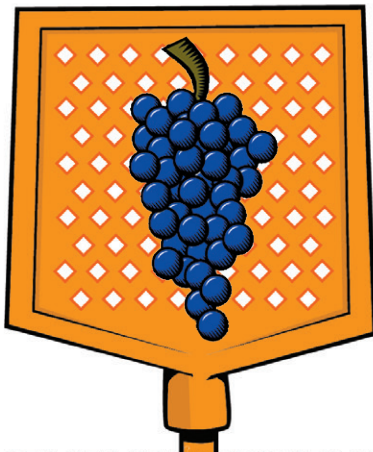
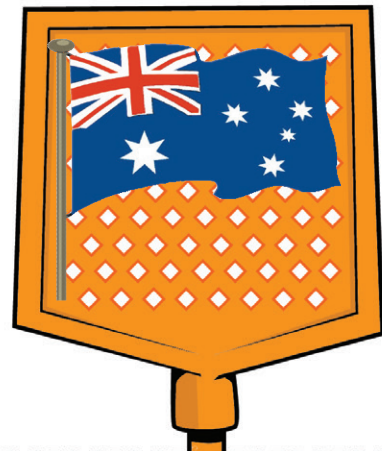
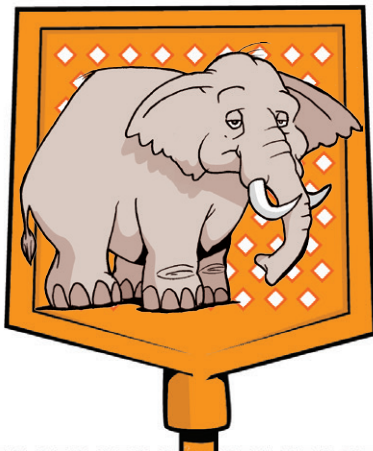
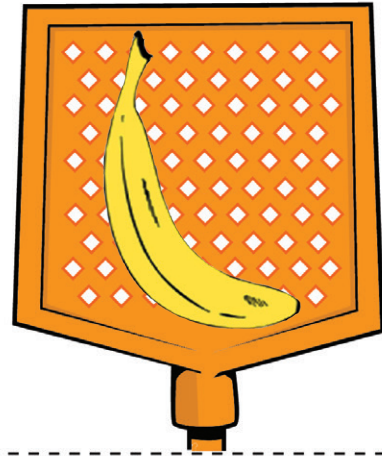
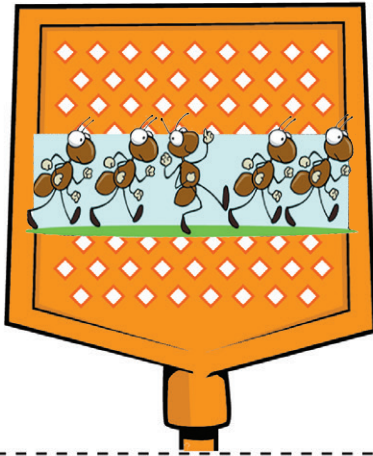


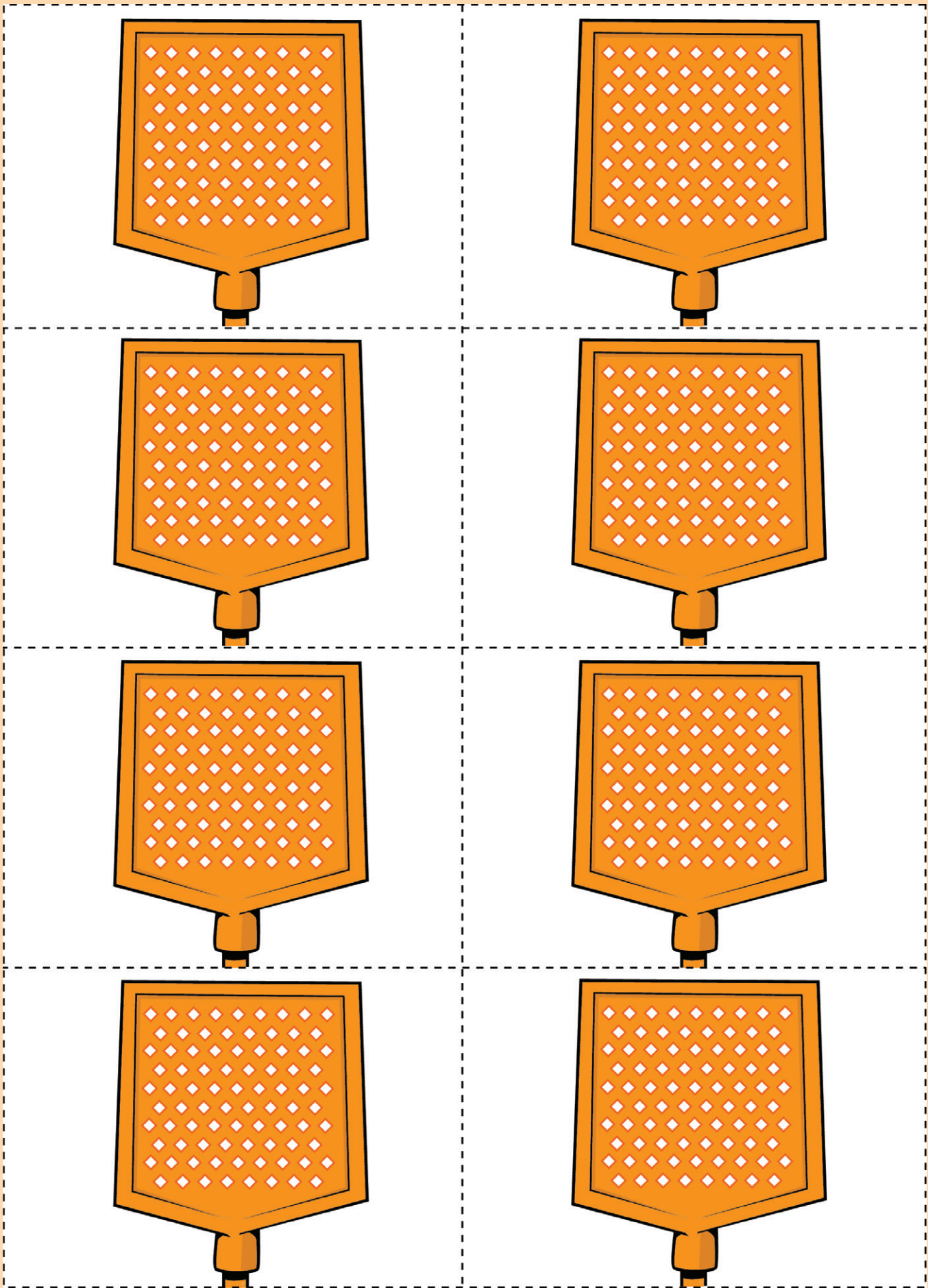


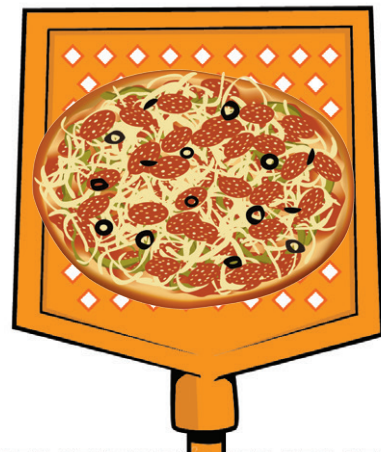
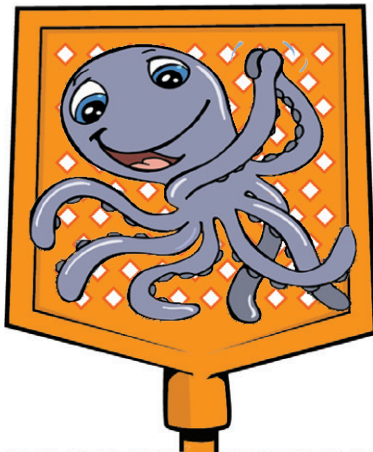
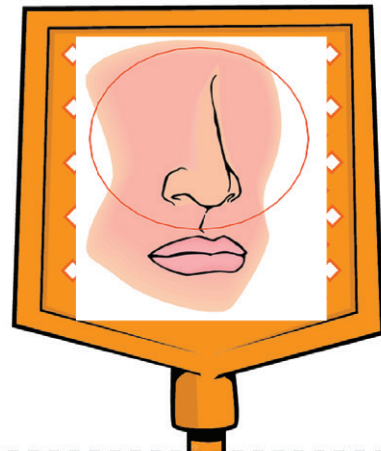
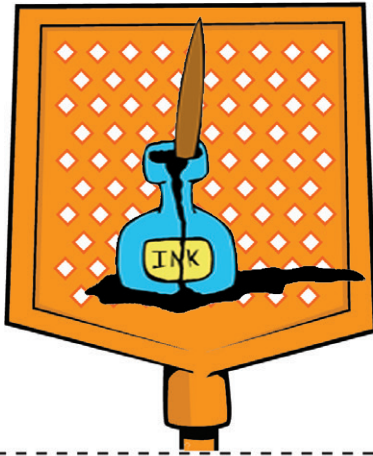


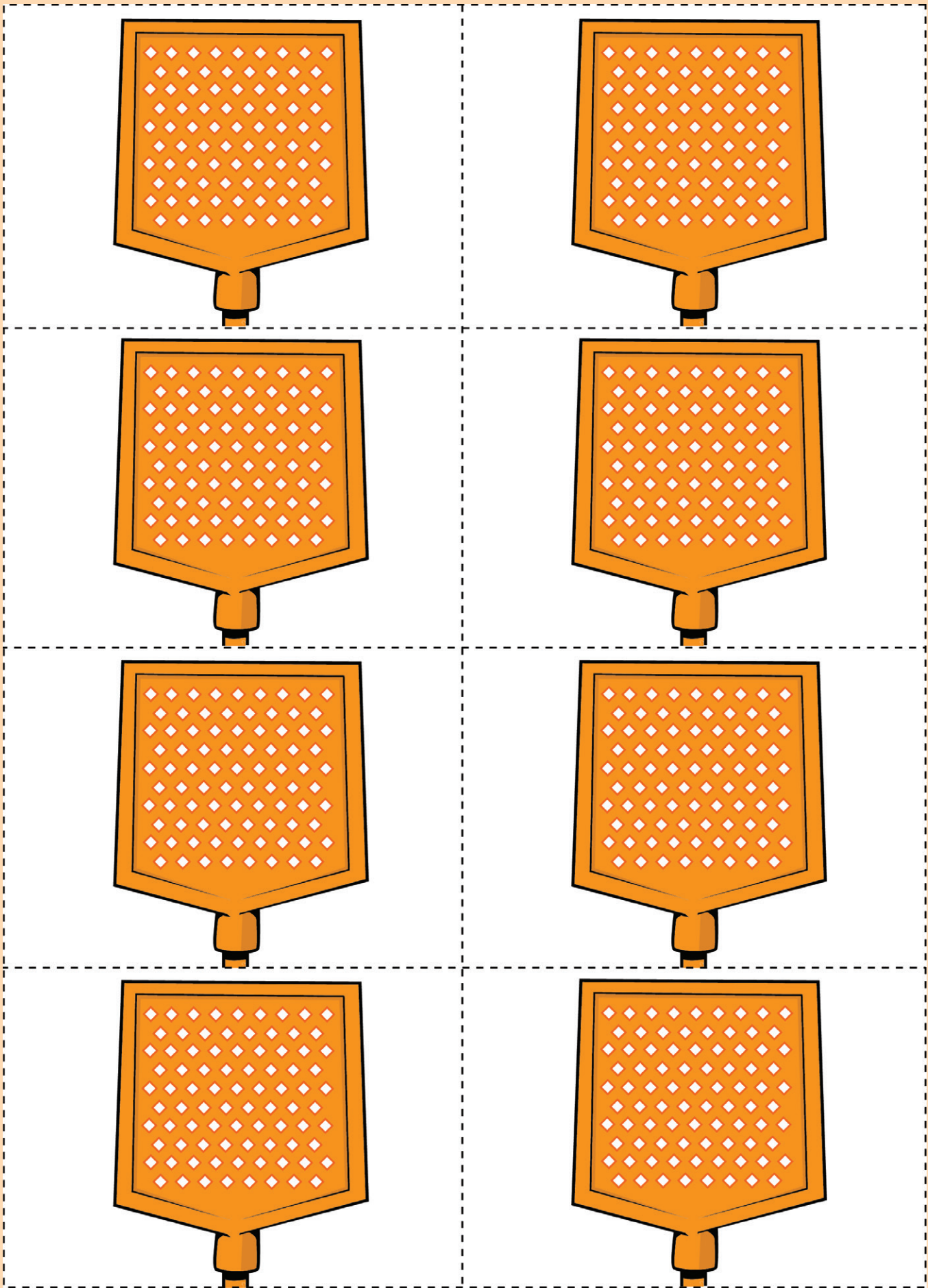


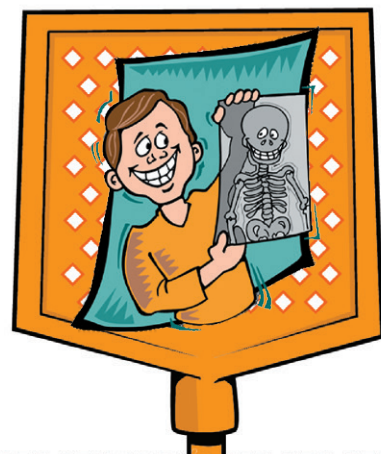
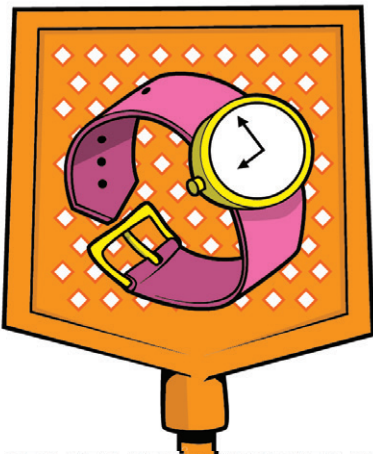
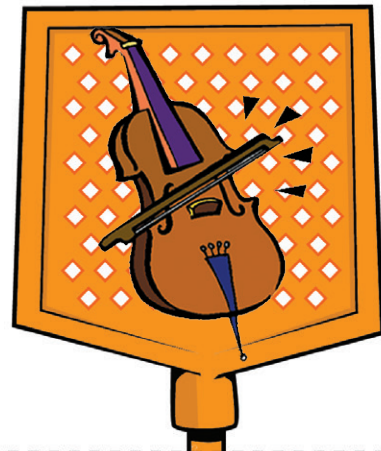
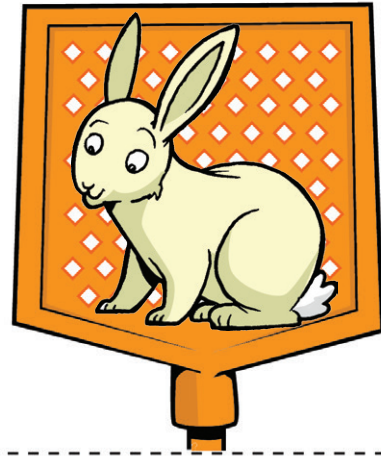


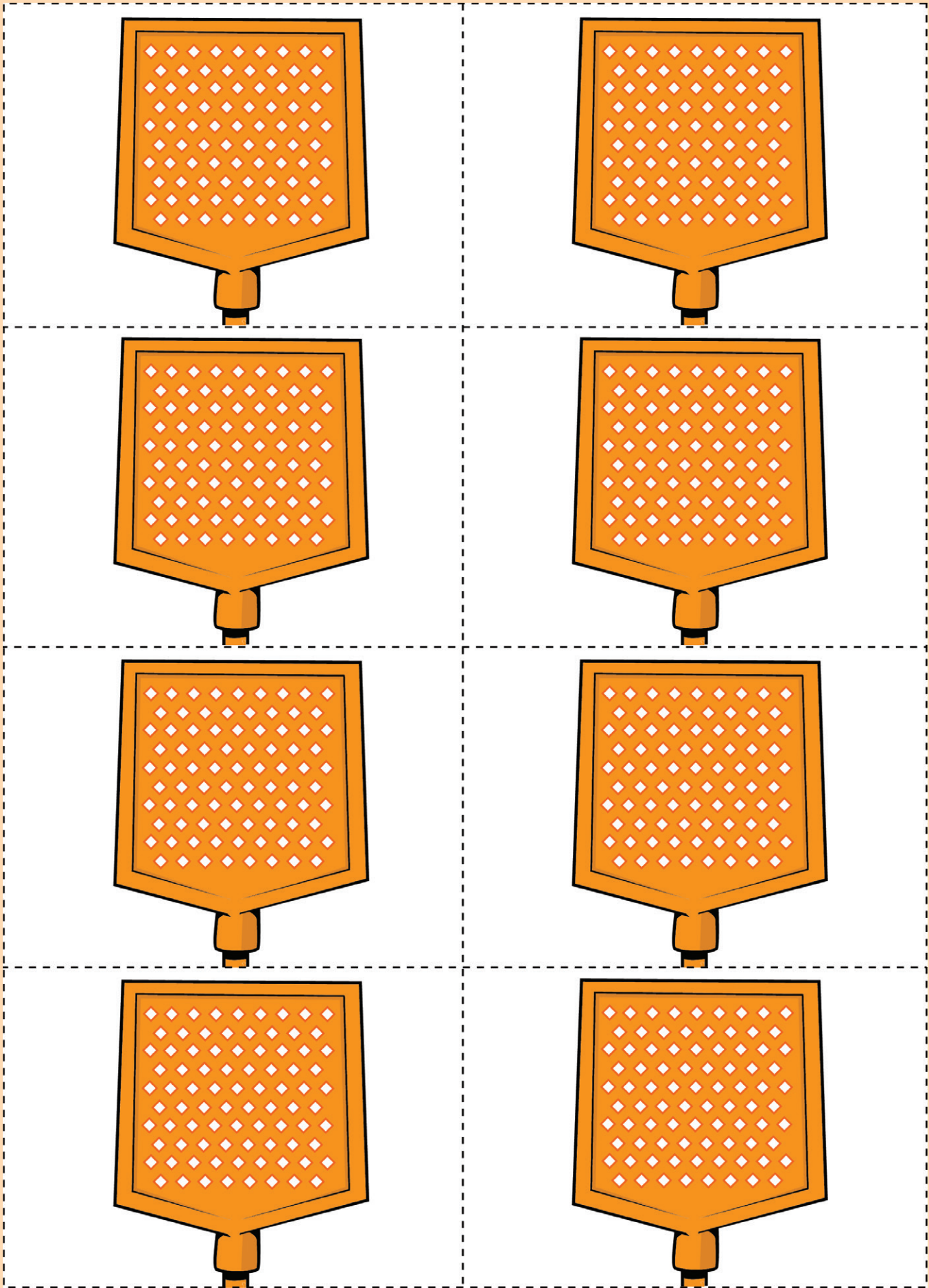














Name \_\_\_\_\_

# Work it Out!

Draw a line to match the initial vowel sound on the fly to the correct 'fly swisher'.

