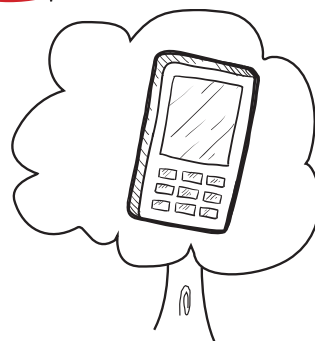
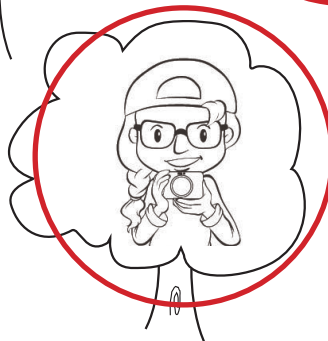
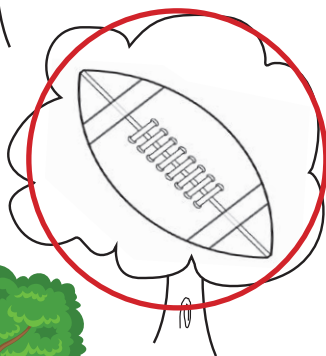
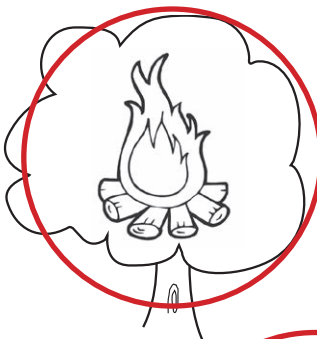




Initial sound 'f'



Help Freddy get out of the forest!
Find the path by coloring the trees green if you hear an 'f' sound at the start of the picture name.



☆ Name _____ ☆ Date _____

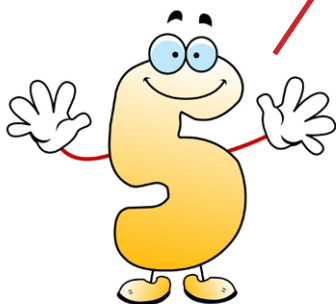
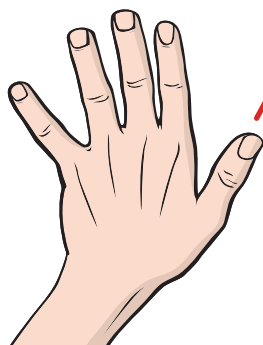
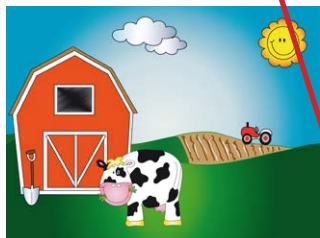


Initial sound 'f'

2

Complete the words.

Match each word to its picture by drawing a line.

fingersflyfullfivefarmfeetforkflower