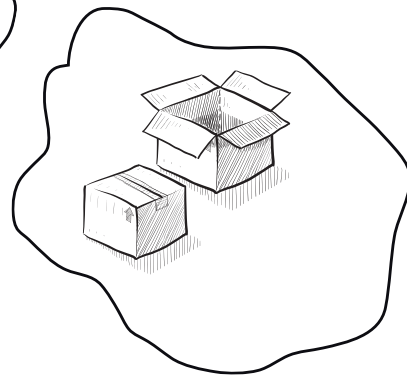
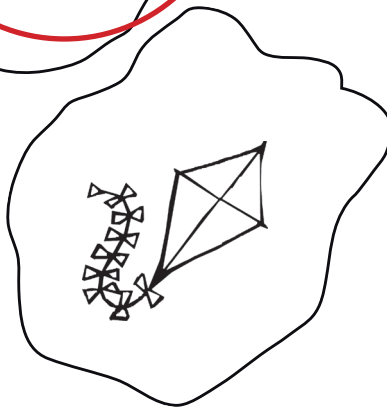
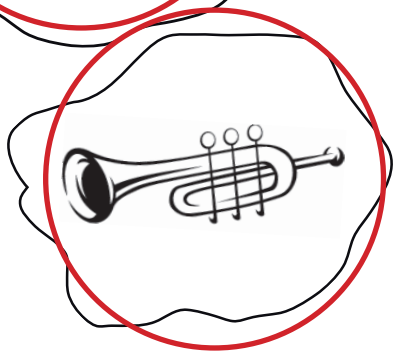
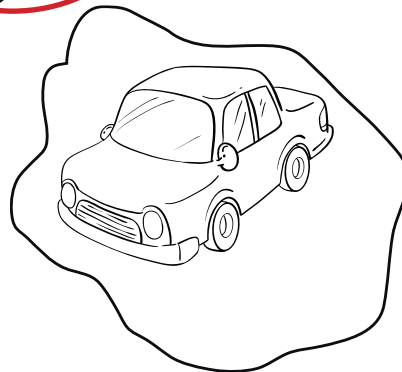
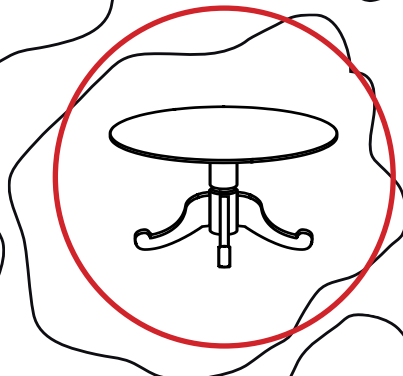
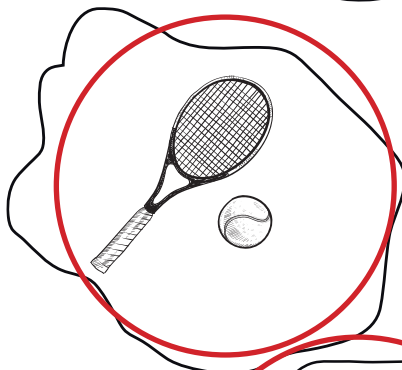
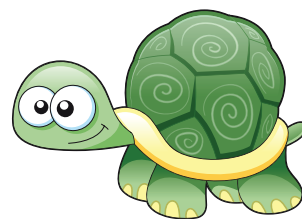
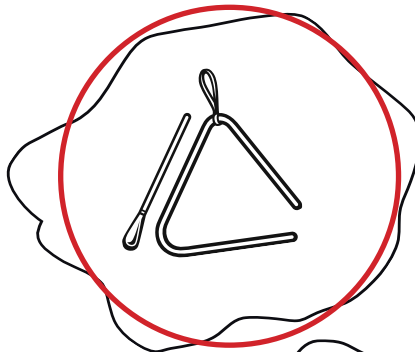
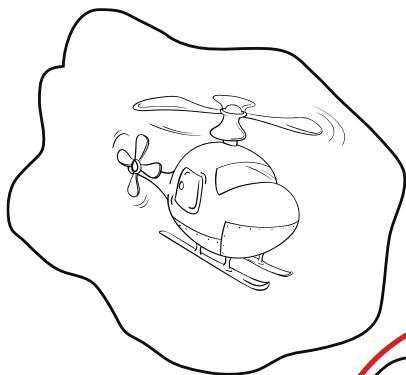




# Initial sound 't'



Help Tammy the turtle reach the pond!  
Find the way by coloring the puddles blue if you hear a 't' sound at the start of the picture name.



Name \_\_\_\_\_



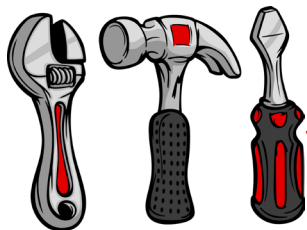
Date \_\_\_\_\_



# Initial sound 't'

2

Complete the words.  
Match each word to its picture by drawing a line.



  teapot

  tiger

  toes

  taxi

  tie

  twins

  tools

  train

