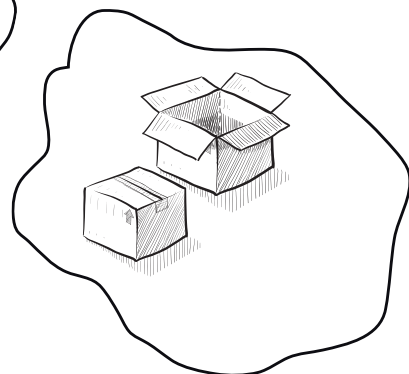
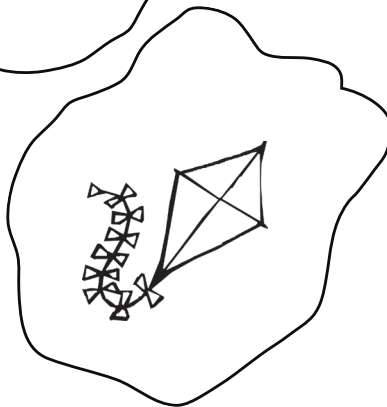
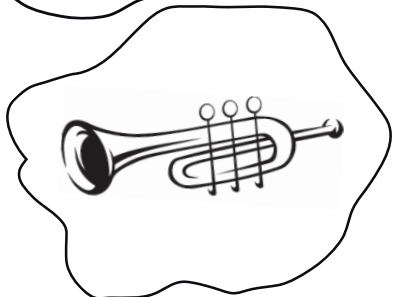
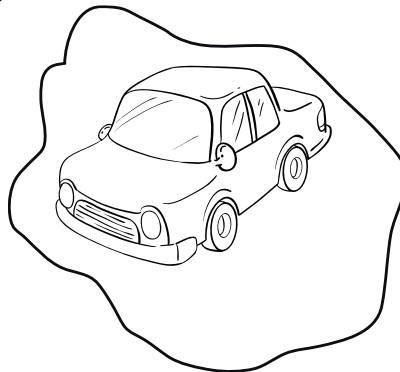
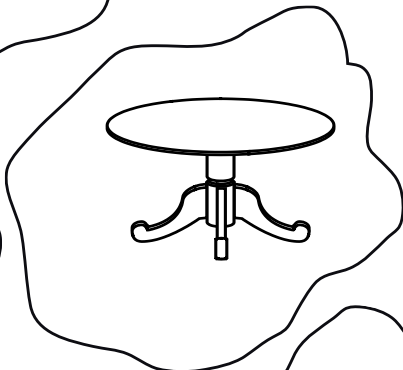
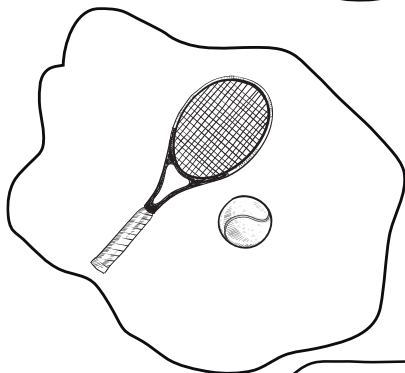
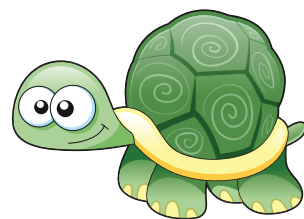
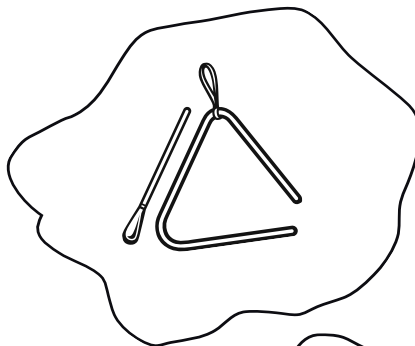
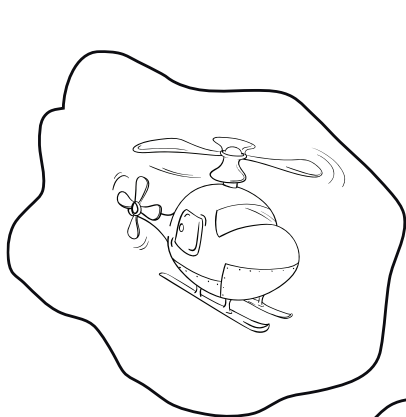




Initial sound 't'

1

Help Tammy the turtle reach the pond!
Find the way by coloring the puddles blue if you hear a 't' sound at the start of the picture name.



Name _____

Date _____



Initial sound 't'

2

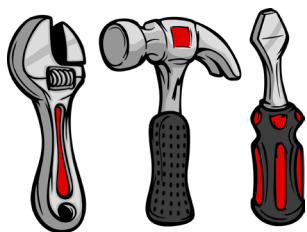
Complete the words.
Match each word to its picture by drawing a line.



t eapot



__ iger



__ oes



__ axi



__ ie



__ wins



__ ools

__ rain

