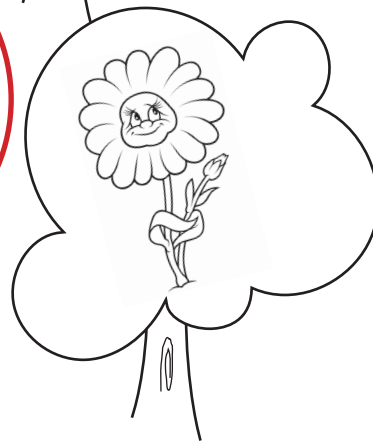
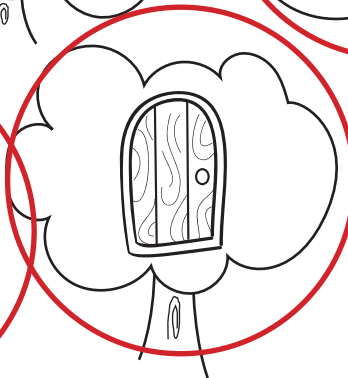
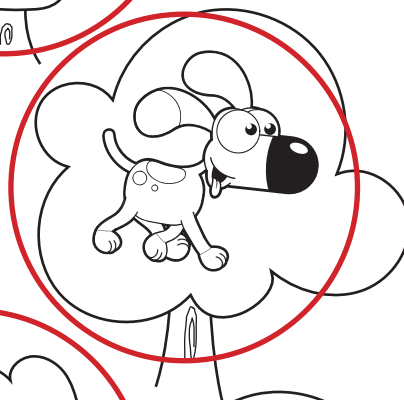
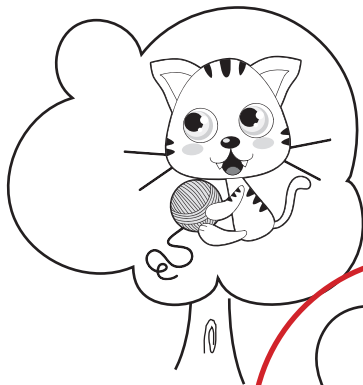
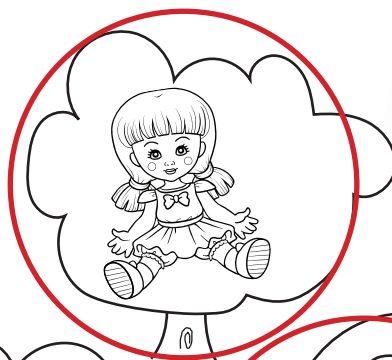
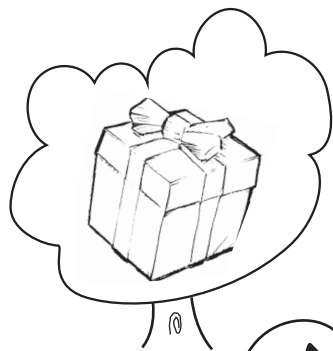




Initial sound 'd'



Help Danny the dragon reach his cave!
Find the way by coloring the trees green if you hear a 'd' sound at the start of the picture name.



☆ Name _____ ☆ Date _____

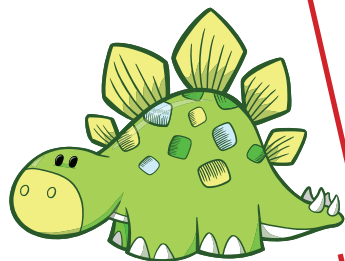


Initial sound 'd'

2

Complete the words.

Match each word to its picture by drawing a line.



dark

diver

dolphin

dock

dance

desk

dinosaur

drink

