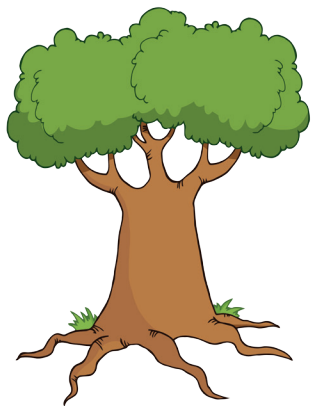
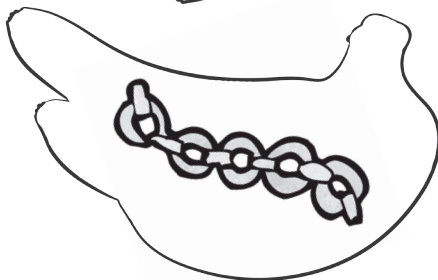
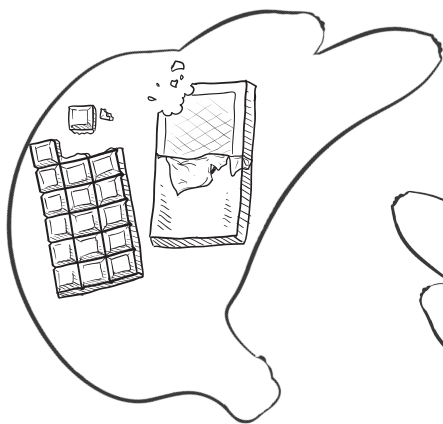
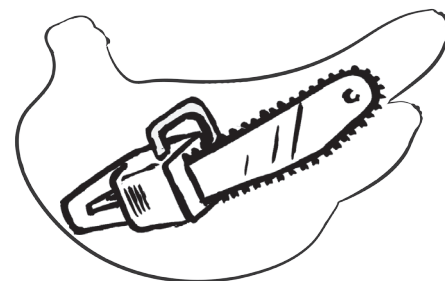
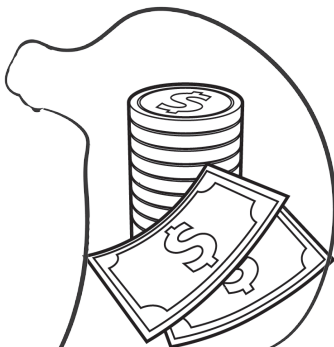
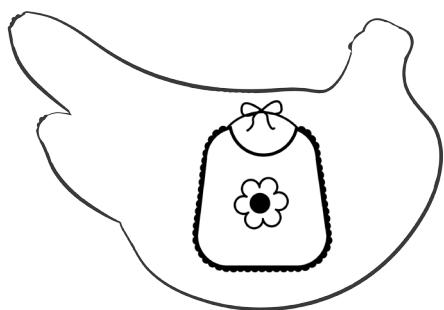
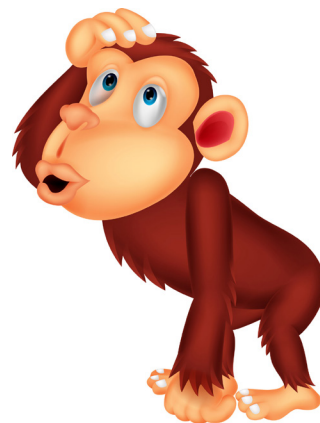




Initial sound 'ch'



Help Charlie the chimp get to his tree!
Find the path by coloring the bananas yellow if you hear a 'ch' sound at the start of the picture name.



☆ Name _____ ☆ Date _____



Initial sound 'ch'

2

Complete the words.

Match each word to its picture by drawing a line.



___ __ air

___ __ est

___ __ ili

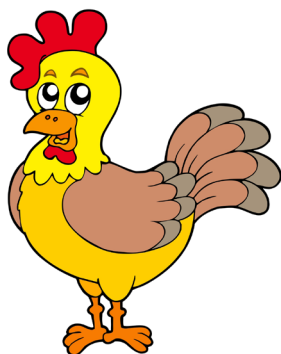
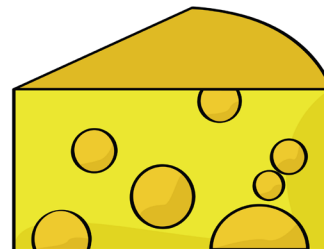
___ __ eese

___ __ ild

c h ips

___ __ icken

___ __ arge



Name _____



Date _____